

MGC-12: User Guide



BEFORE YOU BEGIN

Precautions

WARNING:

Do not expose this product to rain, moisture or water under any circumstances, doing so may result in the risk of electric shock or fire.

CAUTION:

To reduce the risk of electric shock, do not perform any servicing other than that contained in the instruction manual unless you are qualified to do so. Have the unit serviced by a qualified service technician if; The Unit has been exposed to rain or water. The unit does not seem to operate normally. The unit exhibits a marked change in performance

CHOKING HAZARD

Some Products may contain components that are small enough to be swallowed. Please keep out of reach of children.

BATTERY WARNING

- It is recommended to always charge using the included chargers. Improper handling of the battery may result in a voided warranty.
- Never dismantle or pierce the battery or allow the battery to short-circuit.
- Never expose the battery to fire.
- Dispose of used batteries observing local regulations.
- NEVER attempt to replace the internal battery

GETTING STARTED

What's in the Box



MGC-12 Camera



Mounting Bracket

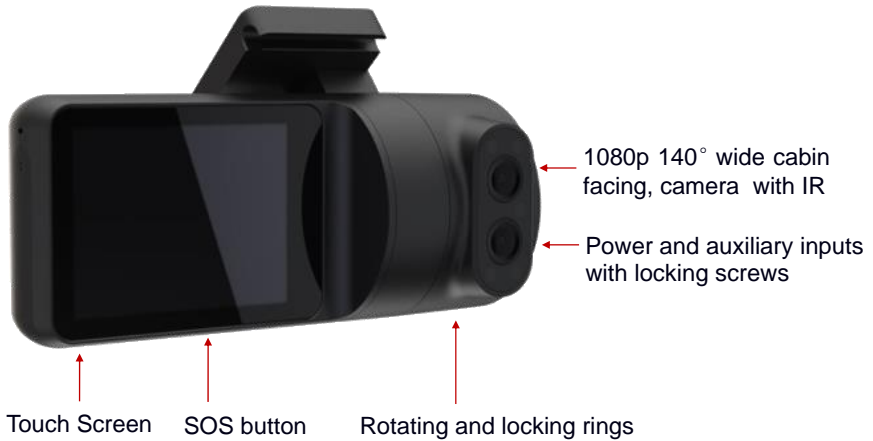
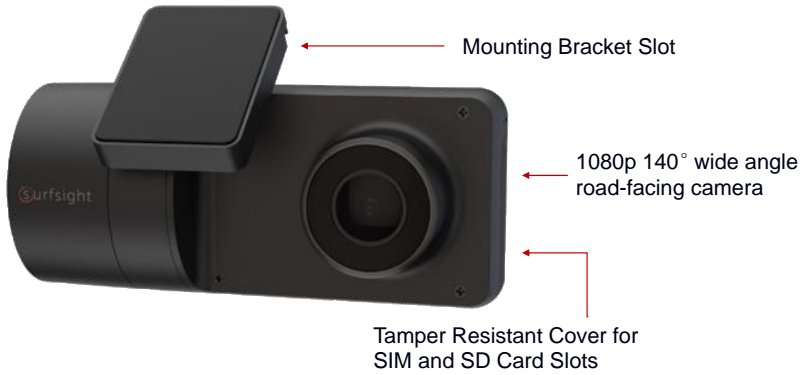


USB Cable



Specialty
Screwdriver

MGC-12 OVERVIEW Product Overview



INSTALLING YOUR MGC-12

Initial setup



- Using the specialty screwdriver unscrew the safety screw that locks the tamper proof case on the side of the camera.
- Insert the SIM and SD card into the appropriate slots in the camera
- Mount the camera by attaching the mounting bracket to the camera, remove the 3M adhesive tape cover and mount the camera to the windshield. The camera should be placed as high as possible on the driver side of the vehicle.
 - ⚠ *Make sure the glass is clean and dry before attaching the 3M adhesive mount to the windshield.*
 - ⚠ *Do not install the product in a location where it can obstruct the drivers field of vision.*

USING YOUR MGC-12

Directing the cameras



Follow the following steps to direct the road and cabin facing cameras.

1. Unmount the camera
2. Using the security screwdriver provided, gently partially unscrew the three security screws on the side of the camera until you can rotate the front and cabin facing cameras. Do not open the screws all the way
3. Make sure that the mounting bracket is not inserted, as it locks the camera and does not allow to rotate the cameras.
4. Connect the camera to an active power source.
5. Enter live view through the main menu on the touchscreen to view the cameras video.
6. Rotate the cameras until they are directed in the proper direction.
7. Unmount the camera and screw in the security screws on the side of the camera
8. Mount the camera with the mounting bracket.

USING YOUR MGC-12

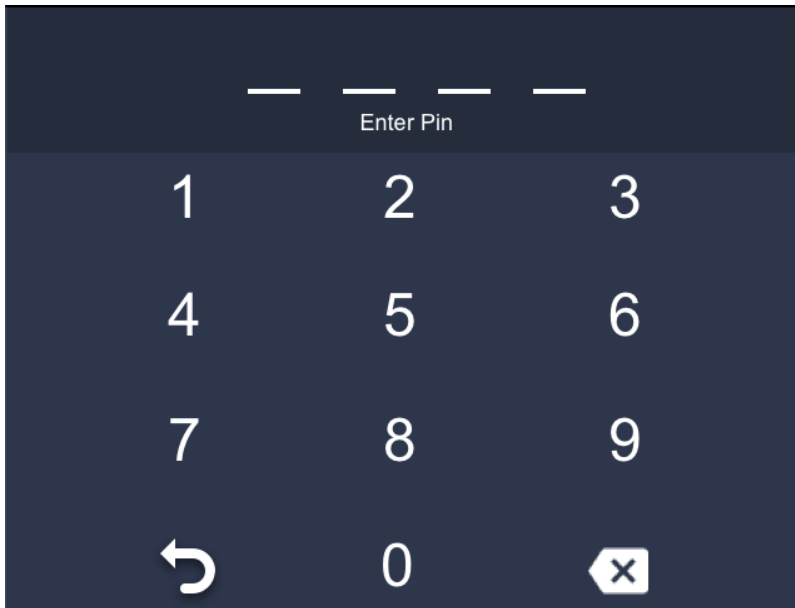
Connect to power



- MGC-12 may only be connected to a power source using the supplied cables.
- The power cable connects to the round connector located on the side of the camera.
- **The power source must provide 5V DC and at least 2A** when connected through the supplied USB cable.
- MGC-12 only power-on when you connect power source, and will power-off after disconnect power source 15 seconds.

USING YOUR MGC-12

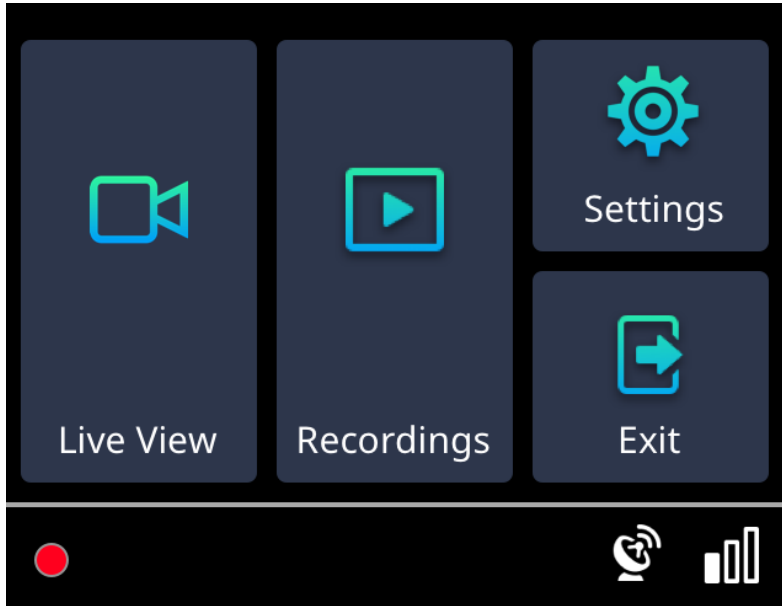
Unlocking your Surfsight



- Press the touchscreen camera on your panel to enter the keypad screen
- Enter **3333**, which is the default PIN to enter the main menu. You should now see the main menu.

USING YOUR MGC-12

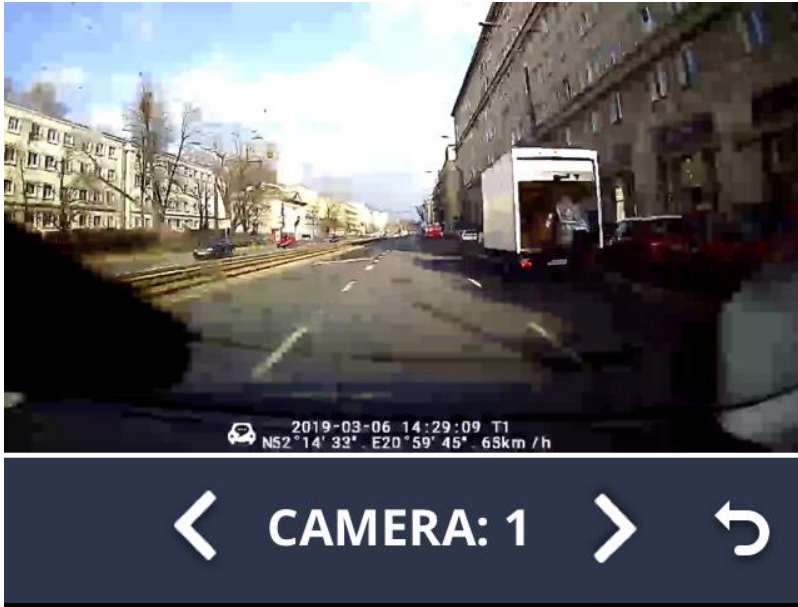
Entering the Main Menu



- The Main Menu has 4 options
 - Live Video
 - Recordings
 - Settings
 - Exit

USING YOUR MGC-12

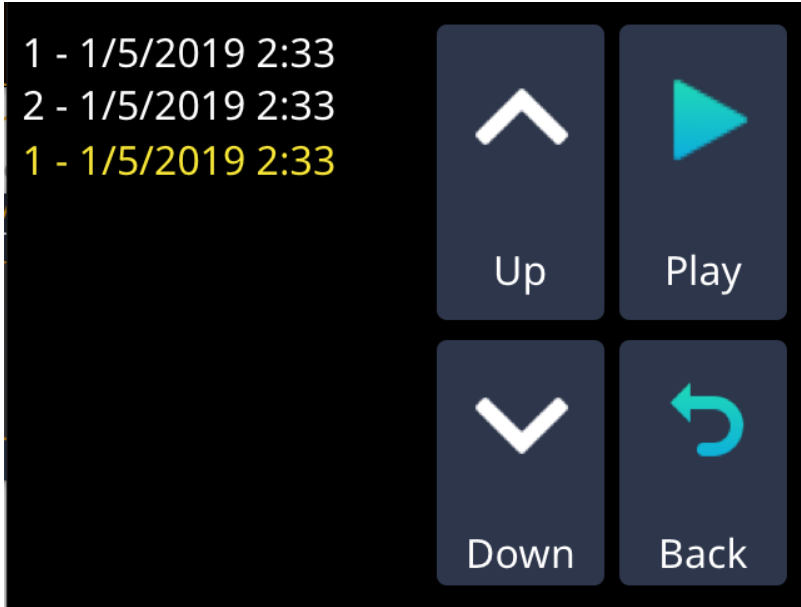
Viewing Live Video



- You will see the live video from the camera displayed on the screen.
- Use the arrow keys to switch between the front and cabin facing cameras.
- Use the arrow back button to return to the main menu.

USING YOUR MGC-12

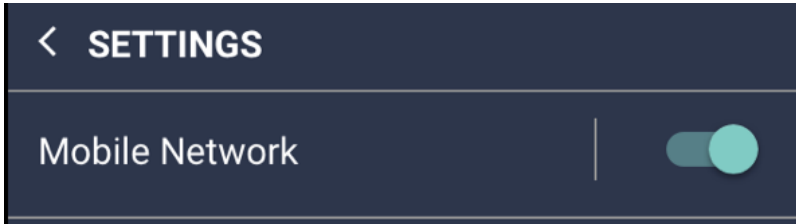
Viewing Recorded Videos



- A list showing all the videos recorded on the SD card will be displayed on the list.
- Use the arrow buttons to scroll through the videos.
- Use the Play button to play the videos.
- Use the arrow back button to return to the main menu.

USING YOUR MGC-12

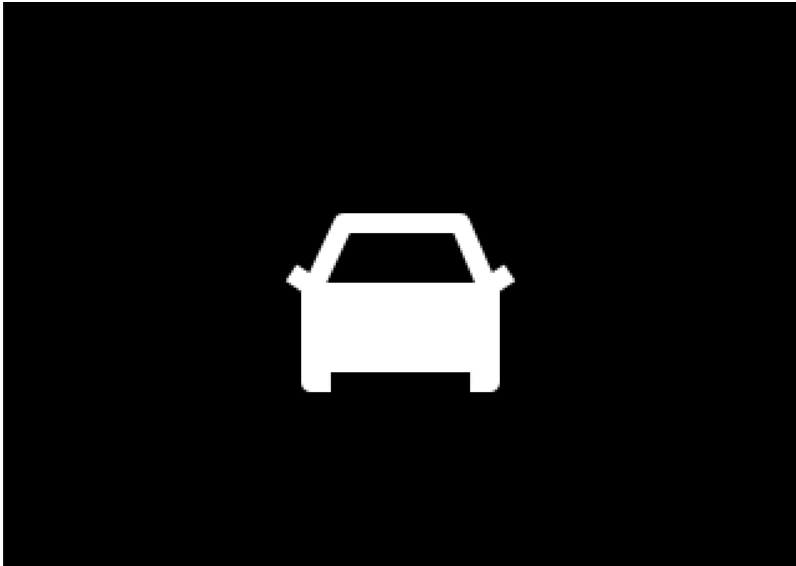
Enter the Settings Menu



- The settings menu will allow you to set various settings available on your MGC-12 including:
 - Driver Facing Camera
 - Text Overlay in Recordings
 - Distracted Driver Alerts
 - Audio Alarms for distracted driver or dangerous turns
 - Change the default PIN to enter the main menu
 - Calibration of your accelerometer
 - Adjust Volume and Screen Brightness

USING YOUR MGC-12

Driving Alerts



- While driving a White Vehicle icon will be displayed on the screen.
- In case a violent turn or distracted driver event is detected, the car icon will turn red, indicating a visual alert for the driver.
- A voice alert will also be heard in case of a dangerous driving event.

USING YOUR MGC-12

Calibrating your sensors

MGC-12 contains an internal accelerometer that detects dangerous driving behavior to automatically create video events.

Cabin facing cameras must be directed at the driver

The accelerometer is not calibrated before installation as every vehicle and installation is different, please follow the following steps to calibrate the accelerometer and direct the cameras:

1. Turn on the ignition in the vehicle
2. Make sure that the Surfsight unit is working
3. Make sure that the vehicle is parked on a level surface.
4. Press the touchscreen and enter the default PIN code
-3333
5. Press on the Settings button and choose calibrate



QUESTIONS?

CONTACT OUR TEAM AT MOTOR GUARDIAN CAM!

PHONE: sales@motorgc.com

EMAIL: (847) 296-4279
