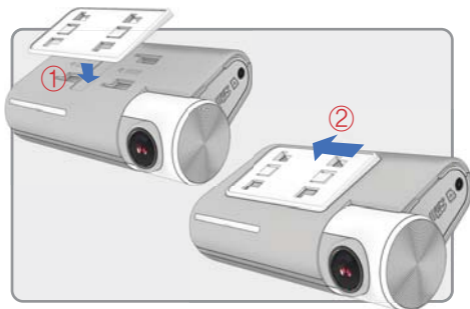


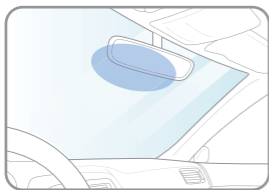
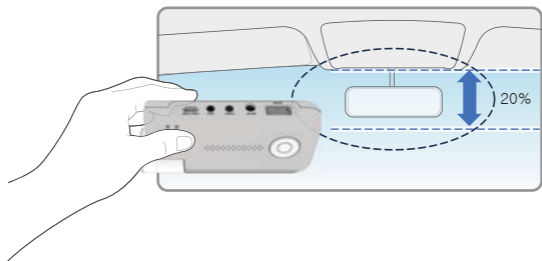
## How to Install Dashcam

- 1 Assemble the Front cam with a bracket. Until the hook is located on right place with coming sound according to the order (①,②).

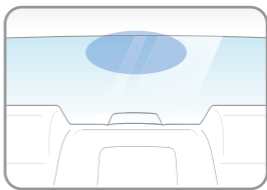


- 
- 2 Insert the memory card into memory card slot, and then detach the cover from the adhesive double side tape on the bracket.

- 3 Install the front camera at the windshield by adjusting the angle.

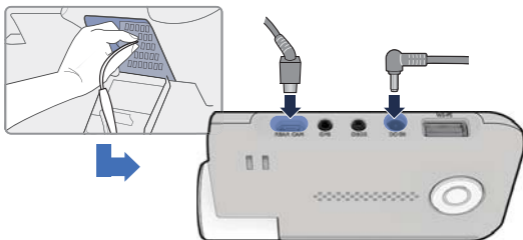


[Front]

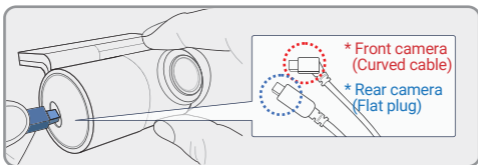


[Rear]

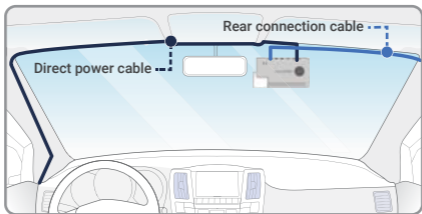
- 4 Connect direct power cable to Fuse box in car.



- 5 Install the rear camera to the rear windshields of the car



- 6 Insert the Power cable and Rear cam connection cable to roofline and pillar.



※ Caution ※

Some car navigations may face GPS reception of interruption. When installing Power cable and Rear cam connection cable. it is recommended to install the each cable in the opposite direction.

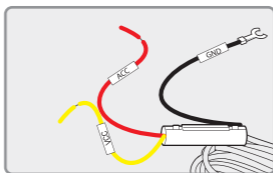
For instance, Power cable is toward driver seat and rear cam connection cable is toward passenger seat.

If you want to the G-SYN CLOUD, GNET APP. and ADAS service, pls connect the Wi-Fi dongle and external GPS into the front camera.

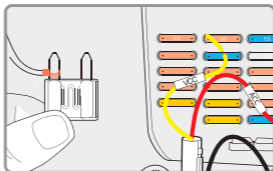
## How to Install Fuse cable

Please refer to the car manual because the fuse box is differ depending on car model.  
It is recommended that install the power from the automobile shop.  
We are not responsible for any damage caused by self-installation.

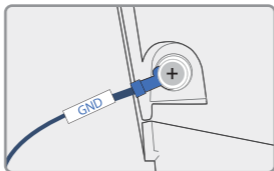
- 1 Find the Fuse box using electric tester from fuse box of the vehicle.
  - ※ [VCC] (Yellow line) : When the car is off, it connects with fuse that current is flowing
  - ※ [ACC] (Red line) : When the car is off, it connects with fuse that current does not flow



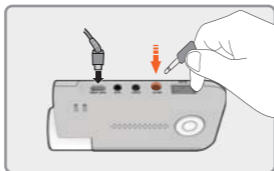
- 2 After connecting [VCC], [ACC] on vehicle fuse, put them into the Fuse box



- 3 Connect [GND] line to vehicle  
(Do not connect the volt which is connected to dash board. Current is not flowing)

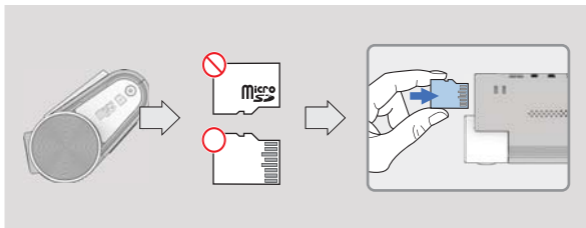


- 
- 4 Connect the power cable to confirm the operation of product.  
And organize cables to finish installation work



## Insert the Micro SD memory card

❗ Please be fully aware before using Micro SD Memory.



- Push the Micro SD Memory card into the memory card slot until you hear 'clack' sound.
- When using memory card for the first time or when the memory card is reused after format, the system will be in stand-by mode for 3~5 minutes to create system files and checking the memory card.
- Recording starts with voice guidance saying "Start recording"