



FHD+HD 2CH SMART
BLACKBOX

A partner in safe driving GNET SYSTEM

Quick User Guide rev01

This manual includes the basic information required in order to set up and operate the G6.



IMPORTANT SAFETY INSTRUCTIONS WARNING

All rights to the product are in GNET and are protected under copyright law.

Unauthorized copying, modification and distribution without prior consent of GNET may be subject to criminal penalties.

- Do not expose the unit to electrical shock or debris.
 - This may cause product damage, fire, or electrical shock.
- Avoid use with excessive vehicle window tints or special auto glass.
 - Images may be blurry or distorted and may cause interference with the reception rate of the GPS.
- Do not modify or dismantle the device/ accessories.
 - We are not responsible for any damage to the device or vehicle due to user tampering.
- Never operate the device or adjust settings while driving.
 - Always keep your eyes on the road.
- Do not use liquids or chemicals to clean the product or accessories.
 - This may cause product damage, fire, or electrical shock.
- Please use a non-scratch lens cloth to clean the product and accessories.
 - Routinely clean camera lens for best results.
- In the absence of the external GPS, the device's date and time may be reset.
 - Please always check that the date/ time is correct.
- When parked for long periods of time in direct sunlight, a temperature increase inside the vehicle may result in a memory card corruption and/ or recognition error.
 - It is recommended to remove the memory card and store it out of direct sunlight during long periods of vehicle inactivity.
- Avoid high temperature or high humidity environment for normal operation of the product.
- Check the operation of the interior camera(S) periodically before driving.
 - Only the front camera will be captured in the event of a malfunction or defect.



CAUTION FOR MEMORY CARD

- Overtime, memory degradation can occur and should be replaced periodically.
- To prevent incompatibility problems, please use only a genuine GNET memory card. The GNET memory cards are specifically designed to operate with our GNET systems and are covered under our warranty program.
- When a vehicle accident occurred, it is recommended to remove the memory card from the device and save the data to a computer immediately. When the memory card is full, the data will be overwritten, and the accident data will be lost.
- Please be sure to remove the memory card only after the recording LED is off. Otherwise, if removed too early, video data could be lost or corrupted. This can also shorten the card's lifespan.
- Please do not interchange / swap the memory cards between other products. Data may be erased and lost if the memory card is automatically formatted.

- It is recommended that the memory card be formatted at least twice a month for product and lifespan maintenance. For best results, please use the official SD Formatter (www.sdcard.org).
- GNET System dash cameras can support memory card (SD) capacities ranging from 32GB to 256GB.
- When a new or used memory card is inserted into the device for the first time, the system will go into standby mode for 3 to 5 minutes. Please do not attempt to remove the memory card during standby mode or when the device is formatting the card.
- It is possible to format the memory card in the GNET application for Mac and PC. Please visit the GNET SYSTEM's website at:
<https://www.gnetsystem.com/eng> → SUPPORT → DOWNLOAD

SPECIFICATIONS

Image Sensor	Full HD CMOS Sensor/ HD CMOS Sensor
Audio input	Built-in Microphone
Video/Audio Compression	H.264 /ADPCM
Resolution	Front Cam 1080P (1920x1080P), Rear Cam 720P (1280x720P)
Recording Time(Approx.)	All cameras : Max. 30 FPS
Wi-Fi (Optional)	Connect to GNET Smart phone application via Wi-fi dongle
G-Sensor	Event recording by External Shock
Speaker	Operation Status alarm / Voice guidance
External GPS	Synched with Google map, Keep track of location and Speed
Angle Of View	Front / Rear : about 140 degree wide-angle lens
Viewer	Windows 7/8/10, Mac, Support 32Bit/ 64Bit, Synchronizing Google map with PC viewer is supported for Windows7 and explorer 10 as per Google's policy.
Power	DC 12V - 24V
Allowable current of providing fuse	3A
Operation Temperature	-10℃ ~ 70℃
Humidity	10~95%
Dimension (WxHxD, mm)	Front: 98x61.5x32, Rear: 45x28x28

※ Specifications and components are subject to change without notice for quality assurance.

PRODUCT COMPONENTS

※The image of the component may differ from the real.



Front / Rear Camera
(including a bracket)



Rear Camera
Connection Cable



Power Cable



Micro SD
Memory card

Optional Product



Cigar Jack



Wi-Fi dongle



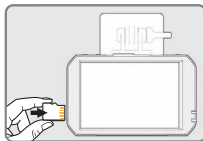
External GPS

※The contents of this product are subject to change without prior notice for improvement of product performance

INSERTING A MEMORY CARD / TOUCH CORRECTING



Be sure to read the precautions
before using
Micro SD Memory Card.

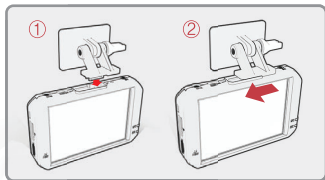


LCD Touch Correcting

Press and hold the LCD screen for 5 sec and then
move to the touch correction screen as
shown on the right. You can correct it
according to the instructions on the screen.



CONNECTING A DASH CAM TO A VEHICLE



Slide the bracket from the left side to the
right side to fit with the top
part of the camera as shown in the figure.
2 push the bracket until the "click"
sound as shown in the picture.
(The uninstall method can be done in
reverse order)

PLAYER MENU NAME



① Tool Box

- Save
- Open Folder
- Print
- Setting

② Google Map

When GPS and internet are connected, it will work normally.

③ Playlists and Information Display

④ GPS reception window

It can be used only when an external GPS is connected.

⑤ Video control popup

- Thumbnail
- Draw a lane
- View a video
- Split View
- PIP View
- Toggle (change) color

⑥ G-sensor (acceleration) graph

⑦ Speedometer

It can be used only when an external GPS is connected

⑧ Play a recorded video

- forward play
- Pause
- Repeat event video
- Previous, Next Event
- play frame by frame

⑨ Adjust playback speed ⑩ Sound control

How to check G-sensor data

<Magnification of G-sensor data>



① The location of the image currently being played

② Numerical values and graphs of three-dimensional coordinate system information (G-sensor data)

- When you play the video, three-dimensional coordinate system information (G-sensor data) on the X-axis(progress direction), Y-axis (left-right), and Z-axis (height) of the image currently being played at the G-sensor data location is output.

How to connect an Android smartphone



- 1 Install the GNET application on the smartphone.

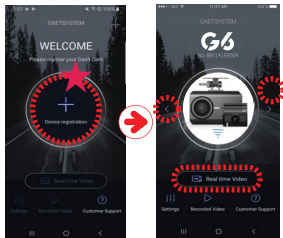
- 2 Tap Wi-Fi button of the dash cam. You can hear a voice message "standby mode for registration".

The registration standby mode keeps for 2 minutes. When the time elapsed, the voice guidance "standby mode for registration is released" will come out.



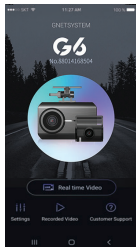
- 3 Touch the "+" to search for your device - use the left and right arrows scroll. Once your device has been located select the "Connect" button.

[★] will indicate first time connection to the device.



- 4 The registration of the dash camera is completed when you hear "User's connected".

* If the connection fails due to a weak Wi-Fi signal, please carefully unplug and immediately re-insert the Wi-Fi dongle back into the camera. Proceed to try the connection again by pressing the Wi-Fi button to enter standby mode.



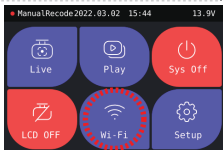
How to connect an Apple iOS smartphone



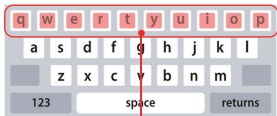
- 1 Install the GNET application on the smartphone.

- 2 Tap Wi-Fi button of the dash cam. You can hear a voice message "standby mode for registration".

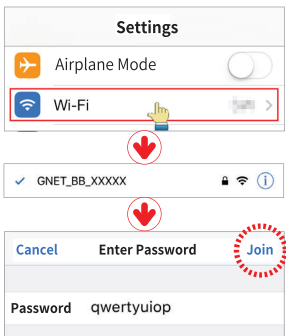
The registration standby mode keeps for 2 minutes. When the time elapsed, the voice guidance "standby mode for registration is released" will come out.



- 3 Enter the Settings menu and proceed to locate and connect to the dash camera's Wi-Fi network (begins with GNET_BB_).

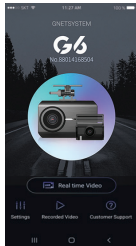


The password is as follows: **qwertyuiop**



- 4 The registration of the dash camera is completed when you hear "User's connected".

* If the connection fails due to a weak Wi-Fi signal, please carefully unplug and immediately re-insert the Wi-Fi dongle back into the camera. Proceed to try the connection again by pressing the Wi-Fi button to enter standby mode.



Warranty Card

Product	GNET Dash cam		Model	G6
Serial Number			Purchase Date	
Customer Information	Name		Tel	
	Address			
Seller/ Vendor			Tel	
Warranty Period	Dash Camera : 1 Year Micro SD card : 3 months			

* If you require product repair, service and/or support,
please contact your local seller or send us an email: info@gnetssystem.com



2200 Estes Ave. 2F
Elk Grove Village, IL 60007
sales@motorgc.com
(847) 296-4279

